



2014/15

ANNUAL REPORT



You keep the Anzac spirit alive

*Thank you for supporting ten years of life-changing work
at the Gallipoli Medical Research Foundation*



An Australian soldier lies wounded in the foreground, as hundreds of other soldiers move among the dead and wounded on the beach at Anzac Cove on the day of the landing. The soldiers wearing Red Cross armbands are tending to the wounded. Boxes of equipment are stacked among the men and the beach is also littered with discarded personal equipment. This scene is looking along the beach to the north. Photograph by Charles Atkins. [AWM PS1659]

Contents

- 4 **Message from the Chairman Tom Ryan**
- 5 **Message from the CEO Miriam Dwyer**
- 6 **Message from the Director of Research Prof Darrell Crawford**
- 7 **GMRF Profile**
- 8 **Ten years of GMRF**
- 9 **Research Activities**
- 17 **GMRF PhD Scholarship Program**
- 22 **Research Grants Awarded**
- 24 **Board of Directors**
- 30 **Committees**
- 31 **Acknowledgements**
- 35 **Financial Highlights 2014–2015**
- 36 **Appendix – Publications per research unit**
- 40 **How you can help**



Message from the Chairman Tom Ryan

It is an honour to once again find myself writing a message of thanks to all of the supporters of the Gallipoli Medical Research Foundation (GMRF).

This time last year, I expressed my hope that our work would display a spirit befitting of the ANZAC commemorations of 2015. Since then, I have been overcome by how our community has exceeded those expectations. You have shown true mateship in support of the vital work of GMRF doctors and scientists. We are immensely grateful for that support.

That spirit of mateship was palpable at our Gallipoli Centenary Ball in April. So many wonderful people came together to make it a success. What made me feel most proud were the moments during the event where we looked back on the history of Greenslopes hospital, right up to today and the innovative work of GMRF. To be surrounded by our colleagues, collaborators, donors and volunteers during those moments of reflection was truly special.

One of the other highlights of this past year has been the phenomenal support of RSL Queensland. They have pledged a further \$5 million to enable our research into mental health to benefit our younger diggers over the next years. This is the true ANZAC spirit – sticking by your mates for the long-haul. I feel very proud of the combined team at GMRF and RSL Queensland for working in unison to make this happen.

Of course, it is not just large organisations that make our work possible. So many of you – individuals, community groups, families – have donated to our work because you believe in the power of medical research. Your foresight and generosity will create outcomes that we can't quite comprehend yet. People that you care about today will benefit in the future because you supported us.

Thank you.

I hope that you feel as proud as I do as you read this Annual Report.



Tom Ryan – Chairman



“People that you care about today will benefit in the future because you supported us. *Thank you.*”

Message from the CEO Miriam Dwyer

As our team began to prepare this Annual Report, it felt very special to think about the past ten years of the Gallipoli Medical Research Foundation (GMRF).

Our Foundation is quite small in comparison to some of the larger research institutes. Yet, as we looked back, the international impact of our work became clear. With your help, we have achieved major results in many areas.

Today, GMRF is...

- The first research institute in the world to launch a large clinical study of the long term impact of post-traumatic stress disorder (PTSD) which focuses on both the genetics of PTSD and the holistic nature of the illness
- The only dedicated liver cancer research facility in Queensland tackling the fastest growing cancer in Australia with immunotherapy
- The Best Clinical Trial Investigator Site for 2014, as voted by our peers – supporting the development of new medicines in cancer, respiratory disease and Hepatitis C.

These are just a small sample of the 'big wins' in recent times. But there is much that happens here every day that does not grab the headlines. One of our collaborators recently sent me an email praising the work ethic of our team, saying our staff: *"always put the patient first... always on top of everything... You are a credit to research in Australia and the patients you treat and support"*. I cannot emphasise enough how proud that made me feel!

As we move forward, our vision remains clear: to enhance the health of the Australian community through the highest quality medical research. This is not science for science sake. Rather, we want to develop real-world, clinically relevant solutions which can treat – and even cure – disease.

Our team is not intimidated by the size of the tasks before us. Each staff member approaches their tasks calmly and efficiently – with our supporters right there beside us making it all possible. I would also like to thank the Board of Directors for their ongoing support and guidance, in particular my thanks goes to the GMRF chairman Mr Tom Ryan who is always only a phone call away.

We value getting to know as many of our supporters as possible. If you should have any questions about the work outlined in this report, please feel free to contact us at 07 3394 7284 or enquiries.gmrf@ramsayhealth.com.au.



Miriam Dwyer – Chief Executive Officer



“As we move forward, our vision remains clear: to enhance the health of the Australian community through the highest quality medical research.”

”

Message from the Director of Research

Prof Darrell Crawford

In medical research, it is very rare that one person finds the cure to a deadly disease. When that does happen, it is a stroke of genius to be celebrated. Often, those are the stories young people dream of when they are considering a career in medicine.

The reality is that new treatments are more often a series of small stepping stones, each leading closer to a cure. We have seen this in recent years with the great strides forward in hepatitis treatment. It has been incredible to be involved in those breakthroughs and I believe it is not unrealistic for us all to hope for similar improvements in other disease areas.

There are two key elements which will ensure the Gallipoli Medical Research Foundation (GMRF) is involved in such advancements:

- a dedication to mentoring our students
- a focus on having clinicians involved in research.

At the monthly team meetings of our Liver Research Unit, I still find it inspiring to see the different perspectives which come from our medical doctors and our scientific doctors. By having a multidisciplinary team, we can develop the most comprehensive studies.

In the pages of this Annual Report, you will read details of international conferences attended by our researchers. When I meet our supporters, they often ask me why this is important. I always say that it is vital. As medical researchers, we spend countless hours at lab benches and office desks collating our individual findings. But you cannot find all the answers alone. Collaboration is vital – absolutely vital – to medical research. Such collaboration is not only grown when our staff members are invited to speak at conferences but also when they offer guidance to other research groups. This cooperative mindset is integral to all of our research units. (Please read inside for details of collaborations per GMRF Research Unit).

On behalf of everyone working in our laboratories, I would like to express our gratitude to our donors for supporting us for the past ten years. This work would not happen without your generosity and we are very thankful.

Prof Darrell Crawford – Director of Research



“...collaboration is not only grown when our staff members are invited to speak at conferences but also when they offer guidance to other research groups...”

GMRF Profile

About us

Gallipoli Medical Research Foundation is an Approved Research Institute (ARI) committed to life-changing medical research.

We engage with individuals, businesses, and communities to grow the research of the Gallipoli Medical Research Institute. We focus on translational research with immediate and meaningful impact. We are proud to be based on the campus of Greenslopes Private Hospital (GPH).

The in-kind support we receive from GPH, in combination with the income we derive from our Clinical Trials Unit, pays for our administrative costs. **Therefore, 100% of donations we receive go directly to medical research.**

Our vision

Enhanced health of the Australian community through the highest quality medical research.

Our mission

To lessen the impact of disease today while also searching for the cures of tomorrow by:

- Working to alleviate the burden of disease impacting our Veteran community
- Providing the infrastructure, governance and resources to support approved research endeavours
- Conducting and funding translational laboratory research; research that can have the quickest movement from 'bench to bedside'

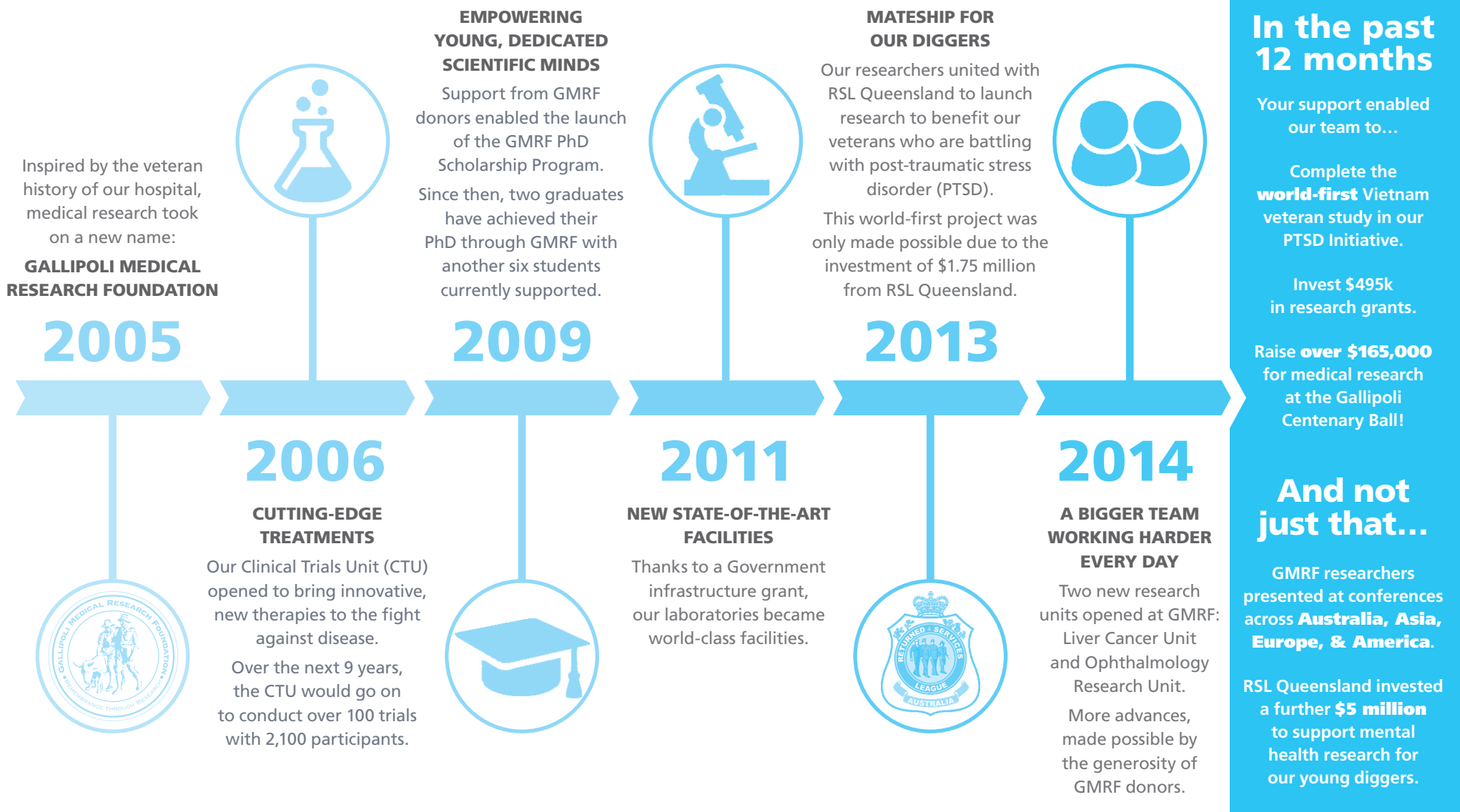
- Facilitating and supporting a culture of medical research within Greenslopes Private Hospital and other related partners through competitive scholarships and grants
- Delivering high quality clinical trials of emerging new therapies for the benefit of our patients and the wider community
- Sharing our results for the greatest benefit of all, thereby increasing community and corporate support for the Foundation and its research

Our core values

- Excellence
- Integrity
- Relevance
- Innovation



Ten years of GMRF



This was a good year. Thank you for making it possible...

Research Activities

Liver Research Unit led by Professor Darrell Crawford

130 international publications
IN 10 YEARS

Change-leaders
in liver research throughout
AUSTRALIA & ACROSS THE WORLD

REGULAR CONTRIBUTORS TO:

- Australian Gastroenterology Week
- American Association for the Study of the Liver Annual Meeting
- Australian Liver Association meeting
- Asia Pacific Association for the Study of the Liver Annual Meeting
- International Bioiron Society

The GMRF Liver Research Unit studies: disorders of iron metabolism, liver co-toxicity of iron, fat and alcohol, the cellular basis of hepatic fibrosis, emerging potential anti-fibrotic therapies, hepatocellular carcinoma, and biliary injury.

The strength of our unit relies on a close interaction between clinicians and scientists. By working together, we are consistently able to produce high quality, relevant research which is readily translatable to real-world situations.

In 2015, our unit entered a formal collaboration with other hepatology research groups within Brisbane. By enhancing these existing collaborations in liver disease, we will ensure ongoing international competitiveness. Such partnerships improve clinical practice and ensure delivery of the best quality care for patients with liver disease.

Over the past ten years, staff members within the Liver Research Unit have gained high regard within scientific and medical communities at both national and international level. Current key activities include:

- Professor Darrell Crawford is Head of The University of Queensland School of Medicine and has been instrumental in the implementation of the University of Queensland MD degree. He continues to serve on advisory panels for pharmaceutical companies and is GMRF Director of Research.
- Professor Nathan Subramaniam is currently a member of the Gastroenterological Society of Australia Council and is on the Scientific Program Committee for *Gastro 2015* (a joint meeting of the World Gastroenterology Organisation and the Gastroenterological Society of Australia).
- Dr Kim Bridle is a current member of the editorial board of *Biomed Research International* in the Hepatology subject area.

The mentoring of clinicians and scientists remains a core focus of the Liver Research Unit. The recent achievements of our students are evidence of the quality of the research programme:

- Dr Amy Sobbe awarded her PhD in July, 2014.
- Dr Janske Reiling was awarded a Graduate School Travel Award from the University of Queensland to attend the preeminent liver meeting worldwide: *The American Association for the Study of Liver Disease Annual Meeting*, held in Boston in November 2014.
- Ms Nishreen Santrampurwala was first runner-up in the *Early Career Researcher Award of the Australian Liver Association* for her presentation at their meeting in Bowral, NSW in May 2015.

In addition, our researchers are presently co-chief investigators on several NHMRC grants. Further funding applications have been submitted for 2016 with collaborative grants planned.

Research Activities continued

Liver Cancer Unit led by Dr Jason Steel

ONLY
research unit in Qld
SOLELY DEDICATED
to liver cancer

6 journal publications **1** book chapter
and **7** conference proceedings
IN THE LAST 2 YEARS

5 conference
presentations
in the past **12 MONTHS**

The GMRF Liver Cancer Unit examines the immunological causes of liver cancer and uses this knowledge to develop new treatments.

The primary focus of our Unit is to grow the team thereby creating the opportunity for quicker advancement. This past year, we have expanded the unit by recruiting a PhD student, Bijay Dhungel, and a Post-Doctoral fellow, Joe Zhou. We plan to take on another PhD student in the next year to continue working on developing immunotherapies for liver cancer.

Bijay has started his PhD work strongly and has generated a number of novel viruses that we are hoping to prove to be liver cancer specific. This will allow us to deliver toxic and immunologic agents directly to the liver cancer with minimal side-effects on normal tissues. Bijay will be testing the viruses for efficacy over the upcoming year and it is expected that this research will result in multiple publications and potentially patents for the new viruses generated.

This past year, we have had three journal articles accepted and published (one in the much-renowned *Nature Communications*) and have three others in preparation. We have also had two abstracts published and presented at five conferences. We were unsuccessful in obtaining NHMRC project funding in 2014 but have submitted another NHMRC project grant for 2015 (results pending).

In 2014/15 we have continued to work with established collaborators resulting in publications this year with Professor John Morris at the University of Cincinnati and Jay Berzofsky at the National Institutes of Health, USA.

We have also established new collaborations with:

- Dr John Chiorini of the National Institute of Health (NIH), USA, who we will work with to design liver cancer selective adeno-associated viruses (AAV). Dr Chiorini is a world leading expert in AAV biology.
- Associate Professor Laura Conforti to examine the effects of hypoxia on liver lymphocytes and its effect on tumour establishment. Prof. Conforti is a world leading expert in ion channels and their effects on lymphocyte motility and function.

The expertise provided by these two exciting new collaborators will help us expand the directions of research in the unit by allowing us to establish new projects in 2015/16.

Research Activities continued

Respiratory Research Unit led by Dr Rachel Thomson

Dr Rachel Thomson
promoted to
ASSOCIATE PROFESSOR
at University of Queensland



Dr Lucy Burr
awarded '**BEST ABSTRACT**'
at The Thoracic Society of Australia & New Zealand
(Respiratory Infectious Diseases) Gold Coast 2015

Researchers at the GMRF Respiratory Research Unit have established an international presence as leading voices on nontuberculosis mycobacterium (NTM) research.

Within Australia, Dr Rachel Thomson is:

- Chief Investigator on two major NHMRC applications
- Lead Australian investigator on INSMED trial of nebulised amikacin in refractory NTM disease
- Member of the NTM Steering Committee

In March 2015, Dr Rachel Thomson was also an invited expert to consult in Taiwan and present on NTM to a multidisciplinary medical team.

In the past year, Dr Thomson has been an invited speaker at:

- International Union against TB and Lung Disease meeting in Barcelona, October 2014
- NTM info symposium in Denver, sessions broadcast on YouTube video
- TSANZ Gold Coast 2015 (Plenary speaker)
- American Thoracic Society annual meeting in Denver with plenary session on NTM
- Australian Cystic Fibrosis meeting in Sydney, August 2015
- Australian Society Infectious Diseases SA meeting in Adelaide, February 2015
- Curtin University, October 2015
- Session Chair at the American Thoracic Society meeting.

Dr Lucy Burr anticipates completion of her PhD work by end of 2015. In the past year, she was an invited speaker at ATSA QLD quarterly meeting (June 2014) and attended the Early Career Research seminar (Mater Research, August 2014) with her work 'Erythromycin and *P. aeruginosa* quorum sensing'. She also held a temporary appointment as Director of Respiratory Unit, Mater Adult Hospital.

Research Activities continued

Ophthalmology Research Unit led by Dr Christopher Layton

SECOND LARGEST PROSPECTIVE TRIAL ON ORBITAL FRACTURES EVER COMPLETED WAS PUBLISHED IN THE JOURNAL OF OPHTHALMOLOGY. PRESENTED TO:

- ODMA eye conference
- School of Medicine Teaching and Innovations Conference
- Grand Rounds at Greenslopes Private Hospital
- The Royal Australian and New Zealand College of Ophthalmologists
- Queensland Journal Club

Teaching and assessment of postgraduate students in **QUT, UNIVERSITY OF SYDNEY & TWO SEPARATE UQ FACULTIES**

Training junior eye doctors in **INTRAOCULAR SURGERY**

Training Community GPs & Optometrists in **OPHTHALMIC DIAGNOSIS**

The GMRF Ophthalmology Research Unit is driven to positively impact the full range of conditions which lead to blindness. Our approach includes laboratory research into the mechanisms of diabetic retinopathy and the establishment of bedside clinical trials in ocular trauma and macular degeneration.

In the past year, the unit produced major findings which were published internationally in the areas of: diabetic retinopathy, ocular trauma, and neurological diseases of the eye.

The unit has also undertaken a major educational effort to improve the research capabilities and clinical skills of local clinicians and scientists in ophthalmology. Dr Christopher Layton provided voluntary teaching and supervision to students from: the Faculty of Health at QUT, three faculties of the University of Queensland, and the Master of Medicine (Ophthalmology) course at the University of Sydney. In addition, Dr Layton taught at a local and national level to practicing Australian optometrists.

It is hoped that the scope of this significant educational effort will have a direct and positive effect on the vision of Australians in coming years.

Dr Mark Woolf joined the team this year, donating his time and bringing 20 years of experience in academic visual science to the unit. We have also welcomed Gabriela de Moraes (who joins us from Brazil on a Science Without Borders Fellowship) and Chia Lee (Lily) Hsu (who is undertaking her Masters of Ophthalmology with GMRF and the University of Sydney). Gabriela and Lily have been very productive, both in terms of their research output and in building knowledge for their future careers as ophthalmologists.

Dr Layton's work as a specialist ophthalmologist continues to provide a real world focus for the unit and its work. The majority of the unit's ongoing direct expenses are sourced through these private funds. Moving forward, the unit will focus on securing senior and mid-level laboratory support staff.

To date, the unit has flourished due to the generous dedication, cheerful good humour and very valuable voluntary contributions of those who have assisted the unit. Special thanks should be extended to: Dr Mark Woolf, Dr Chia Lee (Lily) Hsu, Gabriela de Moraes, Amanda Goh, and Paul Lim.

Research Activities continued

PTSD Initiative led by Dr Wendy Harvey

Recruitment of
300 VIETNAM VETERAN PARTICIPANTS
completed in June 2015

Initial findings to be released at the
International Conference
PTSD 2015 FORUM
in Brisbane, September 2015



GMRF PTSD INITIATIVE
was a finalist in the
QLD MENTAL HEALTH ACHIEVEMENT AWARDS IN 2014

Key partners

The PTSD Initiative has been made possible through the financial support of **RSL Queensland**. An initial grant of **\$1.75 million** funded the inaugural research project in Vietnam veterans entitled 'A study of the physical health and genetics of PTSD'. In April 2015, RSL Queensland announced further support of **\$5 million** over a period of 5 years. This investment will allow the work to expand further mental health research into PTSD in contemporary veterans.



RSL (QUEENSLAND BRANCH)
RETURNED & SERVICES LEAGUE OF AUSTRALIA

RSL Queensland – providing support, advice and camaraderie to the men and women of the Australian Defence Force (ADF) since 1916.

QLD X-Ray performed brain MRIs for approximately 100 patients pro bono, and coronary artery calcium testing and abdominal ultrasound scans for all 300 participants pro bono. The total value of this in-kind support was in excess of **\$160,000**.

Sullivan Nicolaides Pathology provided standard tests at a discount of 54%. The value of this in-kind support was **\$61,500**.

Channel 7 produced a Community Service Announcement (CSA) featuring our Ambassador, Ian Chappell, during the initial participant recruitment drive. The CSA was shown extensively across three stations to an air-time value of **\$120,000**.

Database development and maintenance work for the PTSD study has been donated by **Terence Harvey, husband of Dr Wendy Harvey**.

We would also like to express our thanks to:

Ian Chappell for his active involvement as our Ambassador
Glentworth for data analysis advice and support
Tattersall's Club for hosting a free luncheon for our participants

Investigators

Professor Darrell Crawford	Ass/Prof
Professor Bruce Lawford	Christopher Strakosch
Professor Ross Young	Dr Wendy Harvey
Dr John Gibson	Professor Charles P. Morris
Ass/Prof David Colquhoun	Dr Joanne Voisey
Prof Graham Cooksley	Dr Madeline Romaniuk
Dr Robyn O'Sullivan	Dr Sarah McLeay
Ass/Prof Rachel Thomson	

Research Activities continued

Post-traumatic stress disorder (PTSD) is a mental health condition triggered by experiencing or witnessing a terrifying event. Symptoms may include flashbacks, nightmares, severe anxiety, and uncontrollable thoughts about the event. Around 1 million Australians experience PTSD at some point in their lives. The illness takes a significant toll on our veteran community.

The PTSD Initiative aims to better understand how PTSD (and related mental health conditions) develop and how these conditions affect all aspects of an individual's life (including mental and physical health, and personal relationships). We hope to inform improved holistic treatment options for PTSD that encompass both the mental and physical aspects of the condition.

Vietnam Veteran Study

The initial study of the GMRF PTSD Initiative has been a study of the physical health and genetics of PTSD. Three hundred Vietnam veterans underwent extensive psychological and psychiatric assessments, physical health evaluations, and collection of samples for genetic analysis. Recruitment in this study was completed at the end of June 2015, and analysis of the data is currently underway. Samples collected for genetic testing will be analysed in the coming months.

Results from this study will be presented by Professor Darrell Crawford at the PTSD Forum which is being held in Brisbane in September 2015. To date, abstracts have also been accepted for the Australasian Sleep Association in Melbourne in October, and the Australasian Military Medicine Association conference in Hobart in October.

PTSD Biobank

A biobank is a valuable repository of de-identified biological samples for future research. Of the 300 participants recruited, 295 provided samples for the GMRF PTSD Biobank. This biobank holds blood samples for DNA and RNA extraction, serum, and saliva, and for a subset of participants, semen samples for future epigenetic research. The GMRF PTSD Biobank is one-of-a-kind and provides a very valuable resource that can be used for future PTSD research. Furthermore, it will allow for the development of important international collaborations within the PTSD research community.

Collaborations

Over the past year, we have worked closely with our key partner RSL Queensland to ensure that they are kept informed regarding the progress of our research. Collaborative links have continued with other collaborators, including the Keith Payne Unit and hospital third-party providers Queensland X-Ray and Sullivan Nicolaides Pathology (who have continued their commitment to GMRF PTSD research through their in-kind support).

Throughout the conduct of the study, GMRF have kept participants informed of the study progress through regular newsletters. The GMRF PTSD Initiative also includes collaboration with the Queensland University of Technology, the University of Queensland, and CSIRO.

We would also like to thank Anish Rane, Ash Duncan, and Janet Caffin for volunteering their services during the year.

Contemporary Veteran Research

In April 2015, RSL Queensland committed \$5 million over the next 5 years to GMRF PTSD research in contemporary veterans. This research will focus on the issues relating to reintegration of returned service people into civilian life, the potential for early recognition of these issues, and interventions.

Research Activities continued

Clinical Trials Unit managed by Miriam Dwyer

The GMRF Clinical Trials Unit manages studies primarily in the areas of cancer, liver disease, and respiratory disease. The trials are coordinated by dedicated staff employed by GMRF. In 2013/14 our Clinical Trials Unit was awarded Best Site by our industry peers.

In the past 12 months, we have continued to build a strong reputation due to the untiring work ethic of our team. We are always focused on working promptly and efficiently, in order to garner the greatest benefit to our patients.

In Australia, one person every six hours dies from melanoma. Queensland has the highest rate of melanoma worldwide

In 2014/15, our CTU was the:

- 1st Australian site ready to recruit participants to the KEYNOTE 022, KEYNOTE 029 and KEYNOTE 059 melanoma studies

Prior to commencement, all studies undergo a rigorous ethics review and approval process by the Greenslopes Research and Ethics Committee, a Human Research Ethics Committee (HREC) registered with the National Health and Medical Research Council

Our CTU was the first HREC approved Site in Australia for 10 of our active studies and first **in the world** for one global melanoma study.

For the ORBIT study in Non-Cystic Fibrosis Bronchiectasis, our CTU achieved the 'Big 4'...

- First Australian HREC approval
- First Australian Site Initiation Visit
- First Australian recruited participant
- Highest recruiting Site in Australia

“...Working with the team at Gallipoli is a wonderful partnership...”

Zoe Armstrong

Clinical Research Director (Australia/New Zealand & South East Asia), MSD Medicines

Any profits are returned to the Foundation to support further research. The income derived by the Unit, in combination with the in-kind support we receive from Greenslopes Private Hospital, pays for the administration costs of the Foundation and therefore 100% of money donated to GMRF by our supporters goes directly to medical research.

Research Activities continued

Wound Management Research

In 2011, the Gallipoli Medical Research Foundation (GMRF) forged a relationship as a participant with the Wounds Management Innovation Co-operative Research Centre. This collaborative partnership was established with funding from the Federal Government to undertake research into wound management.

The aim of the research was to work with participants to improve wound healing and quality of life for people with wounds. It was hoped this would provide cost-effective wound care that lessens the burden on the entire health system.

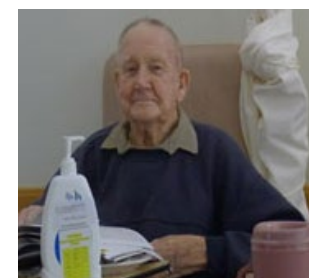
What is a skin tear?

A skin tear is a traumatic wound occurring principally on the extremities of older adults, as a result of friction alone or a combination of shearing and friction forces which separate the epidermis from the dermis (partial thickness wound) or which separate both the dermis from underlying structures (full thickness wound). (Payne, R., & Martin, M. 1993)

Skin tears are the third largest group of all wounds and occur more commonly in the elderly. According to a 3 year prevalence study of public hospitals in Western Australia, these wounds are mostly preventable (WoundsWest 2009).

In 2011, a 6 month incidence survey conducted in Greenslopes Private Hospital showed results of 462 skin tears in 6 months (3% of patients).

The intervention stage of the study focused on the two hospital wards with the highest incidence of skin tears. Our research team found that twice daily moisturisation for patients in these wards resulted in a 45% reduction in the incidence of skin tears.



GMRF PhD Scholarship Program



PhD research: Biliary complications following liver transplantation

Student: Dr Janske Reiling

Supervisors: Professor Jonathan Fawcett, Dr Kim Bridle, Professor Darrell Crawford

In 2012, only 50% of patients on the liver transplant waiting list received a transplant, while 10% died or became unsuitable for transplantation due to disease progression.

To increase the number of donors, livers donated after circulatory deaths are being considered for transplantation. However, such organs often develop injury and subsequent narrowing of the bile duct. Dr Reiling's recent work has focussed on understanding this type of injury and the possible contribution of bacterial breakdown products.

The first results from Dr Reiling's animal study have shown that bacterial breakdown products cause severe bile duct injury. Dr Reiling now wants to test if these breakdown products are present in the blood entering the liver in donation after circulatory death donors. If so, this might well explain the development of bile duct injury and subsequent bile duct narrowing in this group of organs. Serial blood samples will be collected throughout the organ donation process in addition to samples of: liver, bile duct, and bile. Dr Reiling and her collaborators will also collect bile duct samples and bile from the recipients of the liver transplant. To date, the research team have collected samples from 18 organ donors and are currently in the process of analysing the data. Dr Reiling hopes to include around 25 organ donors overall.

In the past 12 months, Dr Reiling has invited to present at several conferences. She has also published her first paper since commencing her PhD, entitled 'Urea production during Normothermic Machine Perfusion- Price of Success?' published in Liver Transplantation, 2015. The high regard for Dr Reiling's work has been evidenced in a number of successful travel grants, which have allowed her to share her findings nationally and internationally:

- 2014: Graduate School International Travel Award (\$5000)
- 2014: Australian Gastroenterology Week 2014 travel grant (\$1000)
- 2015: Hepatology and Gastrointestinal Research workshop travel grant (\$300)

Collaboration remains a key factor in Dr Reiling's work:

- Following a research grant in 2013, she continues to work closely within the joint UQ-Ochsner collaborative research project. This has led to findings where a dose of drugs was able to reduce the development of bile duct injury. Further investigation is currently underway. The work has been presented at the Hepatology and Gastrointestinal Research Workshop and latest data will furthermore be presented at GASTRO 2015 and the liver meeting of the American Association for the Study of Liver Diseases.

As part of her Joint PhD with the University of Maastricht, Dr Reiling will be working in laboratories in The Netherlands from mid November 2015 – April 2016.

Dr Reiling's work is supported by a grant from the Godfrey Family.

GMRF PhD Scholarship Program continued



PhD research: The role of adipocyte iron in non-alcoholic fatty liver disease

Student: Dr Laurence Britton

Supervisors:

Professor Darrell Crawford,
Professor Nathan Subramaniam

Non-alcoholic fatty liver disease is the most common form of liver disease in Australia, affecting around 30% of adults. It can lead to liver failure, liver cancer, diabetes and heart disease.

Little is known about the causes of disease progression within non-alcoholic fatty liver disease (NAFLD). It is vital that we identify the factors that might be responsible. Improved understanding of these causes will provide the basis on which to develop future treatments.

Dr Britton's PhD aims to investigate how iron might influence the pathogenesis and progression of NAFLD. At present, these mechanisms are not well defined and effective treatment strategies are lacking.

In the past 12 months Dr Britton has focused on the role that iron in fat tissue plays in the development of fatty liver disease. This work will form the main body of his thesis. Five publications in the peer reviewed literature are anticipated from this work.

Dr Britton is now conducting his PhD candidature on a part time basis thereby allowing him to continue his clinical work as a gastroenterologist. This combination of lab bench and patient bedside bring a much-needed, real-world focus to this research. Dr Britton is an active contributor to the educational community of Greenslopes Private Hospital (GPH), most recently presenting his work at GPH Grand Rounds in January 2015.

GMRF PhD Scholarship Program



PhD research:

Hfe-associated steatohepatitis: Expression profiling and identifying the molecular basis of liver injury

Student:

Ms Nishreen Santrampurwala

Supervisors: Professor Darrell Crawford,
Professor Nathan Subramaniam, Dr Kim Bridle

Hemochromatosis occurs as a result of too much iron in the body.

In our vital organs, even mild cases of iron overload increases the risk for a myriad of diseases (such as liver cancer, heart failure, diabetes, osteoporosis) up to, and including, premature death.

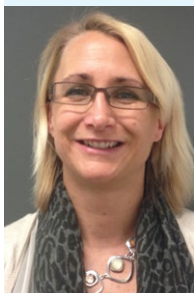
During the past year, Ms Santrampurwala has worked to develop a cell culture model which represents the human condition of non-alcoholic fatty liver disease in a patient who suffers from hereditary hemochromatosis. That is, the model represents a patient who has an overload of iron in their system as a result of their genetic makeup.

In the past 12 months, Ms Santrampurwala developed a model of liver cells loaded with iron and fat in order to investigate mechanisms which might lead to more severe liver disease. In this model, she found a reduced response in a particular molecule (SMAD1/5/8) which might be the cause of elevated iron stores in fatty livers.

Ms Santrampurwala presented this work at the Hepatology and Gastrointestinal Research Workshop of the Australian Liver Association. She received a travel grant from the Australian Liver Association (ALA) of \$300 to attend this workshop and was presented the runner-up Early-Career Researcher Award.

In addition, she has investigated the role of three genes which were found from a liver-screen. While work is ongoing, it is likely that one or more of these genes are modified in response to inflammation of the liver. Further investigation is required to understand their role in the development or progression of liver disease. This now forms the future direction of Ms Santrampurwala's PhD project. She has been granted a 6 month extension to complete this experimental work and hopes to submit her thesis by the end of September 2015.

GMRF PhD Scholarship Program



PhD research: Genetic, biomarker and psychological factors for risk and resilience of PTSD

Student: Mrs Dagmar Bruenig

Supervisors: Dr Joanne Voisey,
Prof R McD Young

While prevalence rates vary, it is estimated that up to 30% of veterans have developed or will be developing PTSD.

A number of psychological and genetic factors have been proposed to contribute to PTSD. However, findings have been inconsistent.

Post-traumatic stress disorder (PTSD) is a debilitating disorder caused by the experience of extreme stress/trauma including exposure to combat. Understanding the causes of PTSD is paramount in reducing the personal and societal impact of the disease. Mrs Bruenig commenced her PhD in February 2014. In the last four months she has confirmed her project aims through the QUT milestone and review process, written a literature review that has been accepted for publication and developed a solid research plan for her PhD.

Mrs Bruenig has conducted an extensive literature search and analysis on a genetic variant of a specific gene (brain-derived neurotrophic factor gene). Following this, an association of the genetic variant and PTSD could not be established. However, the sample sizes of the published studies were small and only a few studies pursued this particular genetic variant in the context of PTSD. Therefore, data from the Vietnam Veteran project will be utilised for a study of this genetic variant and PTSD.

The results from this analysis will then be embedded into the overall analysis mentioned above. Both the association study and the updated meta-analysis are planned for publication.

Mrs Bruenig also has a review article currently in progress investigating the same genetic variant of the brain-derived neurotrophic factor gene in the context of formation and extinction of fear memories. These processes are central to PTSD. Further elucidating the role of this gene in fear processes may provide targets for prevention and early intervention strategies. This review is also planned for publication.

She has also a literature review of her project in print for publication as a book chapter by a prestigious publisher which is a huge achievement. Of significant importance is the recent acceptance of her Honours results for publication in Genetic Testing and Molecular Biomarkers. Dagmar has completed all her expected milestones in the current progress year and is on track to finish her PhD in the allocated time.

The support of RSL Queensland is generously acknowledged.



RSL (QUEENSLAND BRANCH)
RETURNED & SERVICES LEAGUE OF AUSTRALIA

GMRF PhD Scholarship Program



PhD research: Host and environmental factors influencing NTM infection in patients with no overt immunodeficiency

Student: Mr Samuel Halstrom

Supervisors: Dr Rachel Thomson, Assoc. Prof. Patricia Price, Dr Geoffrey Puzon, and Prof. Ian Yang.

Nontuberculous mycobacteria (NTM) are an increasing problem in most western countries, including Australia. Symptoms include chronic cough, haemoptysis, weight loss, fever and progressive fatigue.

Mr Halstrom has defined the scope of his PhD Project with two main aims:

Aim 1: To determine the extent of genetic and immunological predisposition to pulmonary NTM disease.

Aim 2: To investigate the impact of water pipeline bulk water and biofilm environments on presence of pathogenic species of NTM in WA drinking water distribution systems (DWDS).

In addition, the DNA from 32 reference strains (all unique species of NTM) has been obtained (courtesy of the Australian Mycobacterium Reference Laboratory) for the optimisation of a new sequence based technique for the identification and quantification of environmental NTM.

In April 2015, Mr Halstrom was the first author on a paper entitled 'Review: Environmental mycobacteria as a cause of human infection' published in the International Journal of Mycobacteriology. This paper covers the epidemiology of NTM disease with a focus on the sources and modes of transmission linked with lung disease. Mr Halstrom also shares first authorship with Matthew Morgan of a paper entitled 'Characterization of a drinking water distribution pipeline terminally colonized by *Naegleria fowleri*'. This paper is ready for submission for publication.



PhD research: Immunotherapy of liver cancer

Student: Mr Bijay Dhungel

Supervisors: Dr Jason Steel

Liver cancer is the fastest growing cancer in Australia. 745,000 people died from liver cancer worldwide in 2012.

Over the first six months of his PhD, Mr Dhungel has constructed eight different viral vaccine platforms to target hepatocellular carcinoma (liver cancer). These vaccine platforms will soon be tested for their targeting and therapeutic efficacies in vitro (in cancer cells) and in vivo (in mice).

All viruses attack the cells and introduce their genetic material into the host cells. Viral vectors are genetically modified viruses which have their infectious part deleted and replaced with a therapeutic gene. They are carriers to deliver therapeutic gene against a disease.

Since starting his PhD, Mr Dhungel has been designing and constructing viral vectors which have the potential to specifically target liver cancer. He will have the final vector constructed by the end of August 2015 and, within a few months, these vectors will be checked for targeting efficacy in cells and animals.

Mr Dhungel has also started the introduction for his thesis which he will submit for publication as a literature review. This will be completed in coming months and should be submitted for publication before the end of 2015.

Mr Bhungel's full PhD Scholarship is generously provided by the Thorsen Family Foundation.

Research Grants Awarded

GMRF Innovation Grants

The GMRF Innovation Grants were established in 2012 with the aim of giving the staff of Greenslopes Private Hospital (GPH) the opportunity to lead research within their fields. Applications for the inaugural grants were of an extremely high standard and the successful research groups returned to present their findings during GMRF Remembrance Through Research Week 2014.

THE ISSUE	2013 GMRF INNOVATION GRANT	OUTCOME
<p>Almost 7.2 million emergency department presentations were reported by public hospital Emergency Departments in 2013/14 – that's over 19,700 presentations each day.</p> <p>The layout and design of traditional nursing records make it difficult to track the changes in an emergency patient's condition over time. Emergency nursing staff work under stressful conditions and say they need improved measurements to enable them to save more lives.</p>	<p>Cindy Macgregor & Duncan Apelt designed the 'Track and Trigger' study in Greenslopes Private Hospital.</p> <p>They wanted to 'track' the haemodynamic measures (such as blood pressure) of emergency patients to identify at-risk patients and 'trigger' an immediate response across the Emergency Unit.</p>	<p>The study achieved an overall decrease in average wait time of patients admitted to the Emergency Department by 2.4 minutes.</p> <p>The study also decreased the time taken to administer pain relief by 8 minutes and anti-nausea medication by 15 minutes.</p>
<p>The large variety of alarms programmed to go off on various pieces of equipment in the ICU can lead to nursing staff being overwhelmed.</p> <p>In turn, this can lead to adverse outcomes for patients – up to and including death.</p>	<p>Nurse Unit Manager, Elizabeth Lane, led a project that focused on preventing alarm fatigue in the ICU. The project aimed to have all monitoring alarms actionable within 15 seconds.</p>	<p>The research led to a 56% reduction in unnecessary alarms across the ICU. The 3 month audit results post-project showed that 100% of alarms set appropriately.</p> <p>As a consequence of the alarm decrease, the ICU appears to be much quieter. This improvement has been mentioned by not only the patients and the relatives, but also the doctors and other staff that come into the unit.</p>
<p>50% of pressure injuries reported in Greenslopes Private Hospital from November 2012 to December 2013 involved the heel area.</p>	<p>Clinical nurses Karen Eastwood & Ally Macintyre led a trial aimed at preventing hospital acquired pressure injuries on heels for at risk patients.</p>	<p>The hospital has now established a Pressure Injury Committee. All Nurse Unit Managers have a Standard Protocol of Care now and all wards have staging photos, so nurses are confident in staging and treating their patients' injuries. Paperwork has also been simplified for nurses so that it is not open to interpretation.</p>

Research Grants Awarded continued

Due to the loyal support of Hanrick Curran Specialist Accounting and Audit Firm, we were able to invest further funds towards GMRF Innovation Grants in 2014/15. These projects will continue to focus on practical outcomes for patients in GPH.

- \$6,840 was awarded to a project entitled: Developing a process for measuring, documenting and escalating deficits in irrigation fluids in the operating theatre. Lead investigators are Kim Johnson and Renee Shepard
- \$6,840 was also awarded to a the project: A retrospective review of Fluid Balance monitoring at Greenslopes Private Hospital to determine the efficacy of current processes and measure performance against best practice. Lead investigator is Mr Duncan Apelt.

At GMRF, we are certain that these nurses and allied health professionals are going to make practical discoveries that will have a real impact on patient care.

The team at GMRF would like to express our deep gratitude to Hanrick Curran, not only for making these projects possible but for their loyal support to our work.

hanrickcurran
ACCOUNTANTS, STRATEGISTS
experience, new thinking

66 *Innovation and excellence are values we aspire to uphold here at Hanrick Curran so it's great for us to be able to support further practical applications of these values by partnering with GMRF* 99
Tim Taylor, Partner



Board of Directors

1 Dame Quentin Bryce (Patron)

AD CVO

Ms Quentin Bryce has enjoyed a rich and distinguished career as an academic, lawyer, community and human rights advocate, senior public officer, university college principal, and vice-regal representative in Queensland and for Australia.

Her contribution to advancing human rights and equality, the rights of women and children, and the welfare of the family was recognised in her appointment as an Officer of the Order of Australia in 1988 and a Companion of the Order of Australia in 2003. Also in 2003, she was invested as a Dame of Grace of the Most Venerable Order of the Hospital of St John of Jerusalem. On 5 September 2008 Quentin Bryce was sworn in as Australia's twenty-fifth Governor-General. Her term concluded in March 2014 and Prime Minister Tony Abbott announced on 25 March 2014 that Ms Bryce had become a Dame in the Order of Australia.

2 Mr Tom Ryan (Chairman) B Pharm, FACP, FAICD

Mr Tom Ryan formerly a Director and Chairman of Australian Pharmaceutical Healthcare Systems (APHS). Mr Ryan was a founding partner of the APHS Group. The APHS group provides pharmacy services within private hospitals, as well as providing oncology services to a variety of public and private hospitals and also providing an extensive service to aged care facilities for both prescription supply and clinical consultancies, and community pharmacy services. Mr Ryan owned and operated the pharmacy service at Greenslopes Private Hospital from 1995 until 2010.

3 Associate Professor David Colquhoun

MBBS, FRACP, FCSANZ

Associate Professor David Colquhoun is a Cardiologist in private practice. He has been extensively involved in research over the last 30 years involving multi-centre international trials and investigator initiated trials in the area of lipids, nutrition, nutraceuticals and physiological aspects of heart disease, diabetes and obesity. He has presented his research at many national and international meetings. He has a private research organization (CORE Research).

He has published and been a referee for major journals. He has been the AMA spokesperson for Cardiology in Queensland. He is a member of the Scientific Committee of National Institute of Complementary Medicine. In 2008 he attended the 2020 Summit nominated by the National Heart Foundation and was the only cardiologist at the summit. He was a member of the Queensland Government Smart State Council working group on prevention and early intervention approaches to tackle chronic disease.

He is a grant assessor for National Health and Medical Research Council, National Heart Foundation Australia and Diabetes Australia.

He was a member of the National Heart Foundation of Australia (NHFA) Nutrition and Metabolism Committee. He was the Chief Author of the National Heart Foundation's position statement on fish and fish oil in 2008. He is the Chair of the National Heart Foundation's Psychosocial Risk Factors and Coronary Heart Disease Expert Committee. He has been on the Board of the NHFA in Queensland since 2014.



Board of Directors continued

3 Mr Stephen Copplin FCPA, FAICD

Stephen is the Managing Director of the CFO Centre Pty Ltd.

His professional career spans numerous industry sectors, including finance, insurance, investment banking, technology, media and creative industries. During his time, Stephen has successfully managed finance operations for multi-national corporations, negotiated multi-million dollar international acquisitions and divestments and built start-ups from inception through to trade sale.

Stephen is a Fellow Certified Practicing Accountant, A Fellow of the Australian Institute of Company Directors and he is an Adjunct Professor in the School of Business and the School of Electrical Engineering at the University of Queensland.

As a professional Company Director, he currently holds a number of non-executive board positions with both public and private companies.

4 Mr Tim Daniel

B.Bus, Grad Dip HR Mgmt., NZIoD

Following a career of more than 20 years in Medial sales, marketing and management (predominantly Orthopaedics) in New Zealand, Australia and the United Kingdom, Tim joined Ramsay Healthcare in February 2009 as the Chief Executive Officer (CEO) of Kareena Private Hospital, Sutherland Shire Sydney. Following a very successful restructure of clinical services and hospital developments, Tim was appointed to Ramsay's Westmead Private Hospital, Westmead Sydney in July 2011 again as CEO.

In December 2014, Tim was appointed as CEO of Ramsay's Greenslopes Private Hospital, Greenslopes Brisbane where he currently resides.

5 Professor Ken Donald AO

MBBS, PhD, FRCPA, FRCPATH, FRACS(Hon), FRACMA

Originally trained as a Pathologist, Ken Donald has had appointments as an Academic Pathologist, Director of Pathology at Royal Brisbane Hospital and later at Hunter Area Pathology Services, and Professor of Anatomical Pathology at The University of Newcastle. Then followed post-doctoral studies at Erasmus University Rotterdam and Edinburgh University Scotland. He has also been Deputy Director-General of Health in Queensland (for a decade) and in the 1990's was Professor and Head of the Department of Social and Preventive Medicine at The University of Queensland and was, until the 31st December 2006, Head of the School of Medicine. He has chaired a number of major national authorities and committees within NHMRC, AIDS Control, Cancer Control and Veterans' Compensation Systems. In recent years he has been Director of Medical Services at Royal Darwin Hospital and Medical Assistant Commissioner on the Health Quality and Complaints Commission in Queensland, and recently retired as Chair of the Repatriation Medical Authority in the War Veterans Compensation System after nineteen years. He has published extensively in medical literature and Textbooks. In 2009/10 he was Director of Medical Services at Katherine Hospital, Northern Territory. He has recently been appointed Professor of Assessment and Evaluation at Griffith University Medical School. He has lead enquires for Queensland Health which involved post-graduate training, registration of overseas doctors and workforce supply and currently Cancer Services and Public Health Research. In 2007 he was made an officer of the Order of Australia (AO), and in June 2012 received the Premier's 2012 Queensland Great Award.



3



4



5

Board of Directors continued

6 Dr Michael Harrison

MBBS(1st Class Honours). FRCPA (General Pathology)

Dr Michael Harrison is the Chief Executive Officer/ Managing Partner of Sullivan Nicolaides Pathology and is a Consultant Pathologist at the main Taringa Laboratory. Dr Harrison graduated from the University of Queensland in 1977 with an MBBS (1st Class Honours) and in 1984 was awarded FRCPA (General Pathology).

Dr Harrison is the Vice President of Royal College of Pathologists of Australasia, Chairman of the Medical Testing Accreditation Advisory Committee and Chairman of the Quality Use of Pathology Committee. He has presented at many national and international meetings on the topics of Quality, Laboratory Management and e Health.

7 Professor Gerald Holtmann

MD, PhD, MBA, FRACP, FRCP

Professor Gerald Holtmann is Director of Gastroenterology and Hepatology at the Princess Alexandra Hospital in Brisbane, and Associate Dean Clinical at the University of Queensland. He was born in Essen, Germany. He completed his clinical training in Internal Medicine and Gastroenterology at the University Hospital of Essen and by the age of 38, he was appointed Professor of Medicine there as well. He also completed a Fellowship at the Mayo Clinic, Rochester, Minnesota, USA. In 2004, he was appointed Director of Gastroenterology & Hepatology at the Royal Adelaide Hospital, and Professor of Medicine at the University of Adelaide. From 2007 to 2010, he served a term as Chief Executive Officer (CEO) and Medical Director of the University Hospital Essen. Professor Holtmann is a Fellow of the Royal College of Physicians in London and Fellow of the Royal Australasian College of Physicians. His research is focused in the field of Neurogastroenterology and has continuously attracted peer reviewed funding from national and international funding bodies such as the National Health and Medical Research Council (NHMRC), and the German Research Foundation. He has published more than 300 articles and book chapters in leading journals including the NEJM, Lancet and Gastroenterology. Besides his clinical and academic activities, he completed a Master in Business Administration (MBA) at the University of South Australia.



Board of Directors continued

8 Mr Liam Kelly

BA (Hons) LLB (Hons) (UQ)

Liam Kelly graduated from the University of Queensland in 1988 with honours in English literature and in law. He was awarded the university medal for law. He was awarded the Rhodes Scholarship for Queensland in 1989 and attended Magdalen College at Oxford University from where he graduated in 1991 with a Bachelor of Civil Law. He commenced private practice as a barrister in Brisbane in 1992 and continues to practise at the bar as a Queen's Counsel. His field of work is commercial litigation.

9 Ms Carmel Monaghan

B.BusComm, MBA

Ms Carmel Monaghan is Ramsay Health Care's Chief of Staff, following her appointment to this position in January 2015. In this role she is responsible for planning and directing the administrative, operational and strategic activities of the Office of the Chief Executive Officer. She is also responsible for the Company's global marketing strategy; brand management; public affairs; communications; and corporate social responsibility agenda.

Ms Monaghan joined Ramsay Health Care in 1998 and has directed the marketing strategy and communications of the Company through a time of several major mergers and acquisitions both within Australia and overseas, which has seen the Company grow from 12 facilities to over 200 and become one of the top five hospital operators in the world.

During this time she has served in a variety of roles including most recently as Ramsay's Global Head of Marketing and Public Affairs since 2002, responsible for the coordination of the Company's marketing activities across the world and ensuring they aligned with improvement in business performance.

Prior to joining Ramsay Health Care, Ms Monaghan was the Manager Public Relations and Media for the Queensland Branch of the Australian Medical Association (AMAQ) for four years between 1994 and 1998.

Ms Monaghan holds a Bachelor of Business (Communications) from Queensland University of Technology and completed a Master of Business Administration in 2002.

She was a Board member of the Veterans' Research Foundation between 1998 and 2005 and is currently a Director and Company Secretary of the Gallipoli Medical Research Foundation, a role she has held since the Foundation's inception in 2005.



8



9

Board of Directors continued

10 Professor John Pearn AO RDF MBBS

(Hons I), MD (Qld), PhD (Lond), DSc, MPhil, DCH, FRACP, FRCP, FRCPS (Glas), FRACMA, FCollTropMed (Australas), FCollTropMed (USA), FAMA, FADI, FAIM, FLS
Major General John Pearn has served as one of Australia's most senior doctor-soldiers. As Professor Pearn, he is a Senior Paediatrician at the Lady Cilento Children's Hospital in Brisbane; where, at its predecessor the Royal Children's Hospital, he has been a full-time staff clinician since 1968. His major clinical, research and teaching interests in paediatrics and internal medicine have included medical genetics, clinical toxicology, bioethics and accident prevention. Major General John Pearn also served in a second career in the Australian Defence Force, rising progressively through various senior command and executive positions in the Defence Health Service prior to being promoted to the rank of Major General. In 1998 he was appointed Surgeon General to the Australian Defence Force. He served in this role until his retirement in 2000. He is the National Patron of the Peacekeepers and Peacemakers Association, the Papua New Guinea Volunteer Rifles Ex-Members Association and the Australian Water Transport Association. He serves on several national healthcare bodies and associations; and is the National President of the Scout Association of Australia.

11 Mrs Jean Pockett

Mrs Jean Pockett, a member of the War Widows Guild since 1970, is a long standing State Council member and is a past Vice President of the Guild, a position she held on four occasions. She has attended numerous national Conferences and been the Guild's delegate for the ex-Service Organisations. Mrs Pockett has served on the Executive Council and has been a member of the social committee.

She is a member of the Greenslopes Private Hospital Ex Service Organisation (ESO) Committee where she represents the whole of Queensland. In addition to working voluntarily in the State Office of the Guild she is very familiar with the campus at Greenslopes Private Hospital where she has volunteered as a hospital visitor for more than twenty years. Her volunteer work was recognised in 2012 when she was presented with a 40 year Voluntary Service Certificate by the hospital executive. She was an inaugural board member of the Gallipoli Medical Research Foundation. She is also a member of the Queensland Cricketers' Club.



Board of Directors continued

12 Ms Toni Thornton

BA, GradDip, AFI

Ms Toni Thornton is a former Executive Director with JBWere working in an investment advisory capacity to large Non-Profit groups, listed executives and Ultra High Net Wealth families. Toni is the former State Manager Queensland and Executive Director of Goldman Sachs JBWere. Ms Thornton holds a Bachelor of Arts with a Politics major and minor in Economics and also holds a number of post graduate qualifications including Applied Finance and derivatives accreditations. She is a responsible executive of the ASX, has undertaken an Accelerated Executive Management program through the AGSM and has completed the Goldman Sachs JBWere non-profit leadership program. She has been with Goldman Sachs JBWere and JBWere for over 17 years in Investment Advisory roles in Sydney, a Strategic Management role in Melbourne working alongside the Managing Director – PWM and in Brisbane where she was the State Manager for seven years. Ms Thornton previously sat on the board of the South Bank Corporation and the South Bank Corporation audit committee for 5 years.

13 Professor Ross Young

BSc(Hons), MSc, Dip, Clin Psyc, PhD, MAPS

Professor Ross Young was appointed Executive Dean, Faculty of Health QUT in January 2013 following seven years as Executive Director, Institute of Health and Biomedical Innovation (IHBI), QUT.

Professor Young is a Clinical Psychologist and his research interests lie in the integration of psychological and biological risk factors in mental illness. His research includes work in substance misuse, schizophrenia, anxiety disorders, mood disorders and more broadly in behavioural medicine. This includes work in pharmacogenomics and the development of personalised medicine via the use of gene chips. Professor Young has over 210 published book chapters and papers in genetic, medical, psychiatric and psychological journals.



Committees

GMRF Fundraising Subcommittee

Members

Ms Toni Thornton (Chair) – on leave of absence 2014/15

Ass Prof David Colquhoun

Mr Pat Welsh – resigned November 2014

Mr Stephen Copplin

Mr Mark Page – resigned November 2014

GMRF Finance and Audit Subcommittee

Members

Mr Stephen Copplin (Chair)

Mr John Gallagher – resigned November 2014

Mr Mark Page – resigned November 2014

Mr Tom Ryan

Mr Liam Kelly

GMRF Research and Governance Subcommittee

Members

Prof Ross Young (Chair)

Ass Prof David Colquhoun

Prof Darrell Crawford

Prof Ken Donald

Dr Michael Harrison

Prof Gerald Holtmann

GMRF Clinical Review Committee

Dr Edwin Blackwell, MBBS, FRACP, FRCPA

Senior Lecturer, Department of Medicine, the University of Queensland; Consultant Physician in Clinical Haematology and Medical Oncology, Greenslopes Private Hospital.

Dr Glenda Powell, AM, MBBS, FRCP (Edin), FRACP, FAFRM

Emeritus Consultant in Geriatric Medicine and Rehabilitation, Greenslopes Private Hospital; Emeritus at Princess Alexandra Hospital; Private Practice – Medico-Legal.

Ass Prof Christopher Strakosch, MD, FRACP

Consultant Endocrinologist, Greenslopes Private Hospital; Associate Professor and Head, Discipline of Medicine. UQ, Greenslopes Campus.

Prof Michael Whitby, MBBS (Qld), DTM & H, MPH, PhD, FRACGP, FRACP, FRCPA, FRC Path, FACHSHM, FAFPHM

Prof Whitby is an Infectious Diseases Physician/Microbiologist. He is Professor of Medicine, University of Queensland, Greenslopes Clinical School, and Professor, and Clinical Director, CRE in Reducing Health Care Associated Infections, Institute of Health and Biomedical Innovation, Qld University of Technology.

Ambassador

Ian Chappell – Ambassador for PTSD Initiative

Acknowledgements

We gratefully acknowledge the long term support and investment in our medical research by all of our supporters. 2014/15 was a year of commemoration and celebration... thanks to you.



RSL (QUEENSLAND BRANCH)
RETURNED & SERVICES LEAGUE OF AUSTRALIA

GREENSLOPES
PRIVATE HOSPITAL



Discovery Partners

The GMRF Discovery Partner Honour Board is found in the heart of Greenslopes Private Hospital and acknowledges individuals and organisations that have chosen to become a part of our research team. We sincerely thank our Discovery Partners for helping us to conduct research that restores lives.

Corporate

Emeritus (\$1 million +)

RSL Queensland

Mastery (\$500,000 +)

Greenslopes Private Hospital

Ramsay Health Care

The University of Queensland Faculty of Health Sciences
– School of Medicine

Visionary (\$250,000 +)

Sullivan Nicolaides Pathology

Medinet

Innovator (\$50,000 +)

APHS

Baxter Healthcare

Device Technologies Australia

Johnson & Johnson Medical Pty Ltd

Medtronic Australasia Pty Ltd

Olympus Australia Pty Ltd

Philips Medical Systems

QML Pathology

Queensland University of Technology

Institute of Health & Biomedical Innovation (IHBI)

Queensland X-Ray

Roche Products Pty Ltd

Spotless Group Limited

Stryker Australia

Community

Mastery (\$100,000 +)

Diggers Dozen Volunteers

War Widows Guild of Australia (QLD) Inc.

Visionary (\$50,000 +)

Kedron-Wavell Sub Branch RSL &

Kedron Wavell Services Club Inc.

Qld ex-Prisoner of War Association Inc.

Innovator (\$10,000 +)

Alma Williams & Friends

City of Brisbane Consistory No 1

A&AS Rite of Freemasonry

Coorparoo & Districts RSL Sub Branch

Gill's Old Bastards

Greenbank RSL Services Club Inc.

Greenbank RSL Sub Branch

Greenbank RSL Sub Branch Women's Auxiliary

Redlands RSL

Sherwood-Indooroopilly RSL Sub Branch

Sherwood Services Club Inc.

Stephens RSL Sub Branch

Walking on Sunshine

Wynnum RSL Services Memorial Club

Acknowledgements continued

Individual

Emeritus (\$100,000 +)

Mrs Norma Jean Bracken
John & Elaine Feddersen
Mr & Mrs John
& Wendy Thorsen

Mastery (\$50,000 +)

Mr & Mrs Brett
& Zahra Godfrey
Pearl Logan, Lyn Unsworth
& The Logan Family
Foundation
Mr & Mrs Blair & Joy Smith
& Mrs Jeanne Lesley Usher
Marjorie Trundle

Visionary (\$25,000 +)

Mrs Betty Buising
Prof Darrell Crawford
Dr Chris & Dr Simone Layton
Dr Rowland Noakes
Roger & Marjorie Trundle

Innovator (\$5,000 +)

Mr Rolf Albrecht
Dr L Barrett
The Barrett Family
Mr Leslie A Batros
Dr A Bofinger
Dr R Bach & Dr C Boothroyd
Mrs Mary & Mr Wally Boydell
Mrs Beris Broderick OAM
Mrs Margaret Brodie
Mr Malcolm Broomhead

Mr Vivian Byatt
Dr Lillian Cameron
Rick & Sue Chisholm
Assoc Prof David Colquhoun
Mrs Joan Evelyn Court
Douglas & Helen Cowlshaw
Mr Douglas Cranstoun
Mr Peter Darmody
Mr & Mrs William
& Lynette Deacon
Dr Jeff Deslandes
Ms Helen du Frocq
Dr Stephen Fine
Mr & Mrs D Fort
Mr Colin Garrett
Dr John Gibson
Mr Cyril Gilbert OAM
POW Changi
Mr David McDougall
POW Changi
Mr & Mrs Geoff
& Helen Glanville
Mr Cyril Golding
Prof Emeritus Richard D
Gordon AO
Mr Keith & Mrs Olive Gore
Mr G. M. Grant
Dr Trevor Gray
Mr & Mrs Lloyd
& Sharon Grundy
Dr Ross Gurgo
Dr Bruce Hall
Mr Robin Harvey

Dr Steve & Julie Hearn
Mrs Patricia Hemsley
Dr Pia Iocavella
Mr & Mrs Robert
and Norma James
Dr Eileen Heyne
& Dr Imre Kalas
Dr R Kennedy
Dr N Kewal
Mr Alan Kinkade
Mr T Kinnane
Dr P Kortlucke
The Irving/Legerton Families
Keong Lim
Dr Ashim Majumdar
Mrs Freda Mangano
Dr Glenda McLaren
Mr James McNeil
Dr B Moore
Mr & Mrs Ken Naramura
Mr & Mrs Bob
& Bernadette Ney
Assoc Prof A Nicol
Assoc Prof D Nicol
Professor Andreas Obermair
Kevin & Miriam O'Shea
W G Patrick
Mrs J Pockett
Dr G Powell
Dr J Preston
Dr Kirsten & Dr Chris Price
Dr S Rahman
Dr J Reddrop

Mr Edward Rigden
Dr D Rosengren
Henry & Judi Scheuber
Dr P Sharwood OAM RFD
Mrs Betty Smith
Ms Sheila B Smith
Dr Lynda Spelman
Mrs Anne Stanton
Assoc Prof Charles Steadman
Professor Michael Stowasser
Assoc Prof
Christopher Strakosch
Nr Nichalos (Pepper)
& Mrs Maria Taifalious
Mrs Jean Thompson
Mr & Mrs Brian
and Anne Thornton
Mrs Gwendoline C Trimble
Mrs Joye Trundle
Mrs Joanne Lesley Usher
Mr & Mrs Nicholas
& Eugenia Vallianos
Dr G Wagner
Dr Peter Waterhouse
Dr Noela Whitby AM
& Prof Michael Whitby
Dr Peter Whiting
Mrs Alma Williams
Mr & Mrs John
& Leone Wilson
Dr Glen & Mrs Susan Wood

Foundations, Trusts & Estates

Foundations

Paul Ramsay Foundation
Cory Charitable Foundation
Goldman Sachs JBWere Foundation
James N Kirby Foundation
State Trustees Australia Foundation
The Honda Foundation

Estates

Estate of Christina Ann
Alexander
Estate of Mr Victor John Bahr
Estate of Mr Jeremiah Coffey
Estate of
Mrs Marjorie H Eastman
Estate of Mrs Josie Clare Grinsell
The Family of Dick
& Elsie Hagerty
Estate of
Mrs Mary Lamond Hinkley

Estate of Mr Mark Kelly
Estate of Eugenie J MacLennan
Mr G.D (Doug) Murray
Estate of Shirelle Nahow
Estate of Mrs Joyce Smith
Estate of Mrs Lucie Spatz
Estate of
Mrs Gwendoline C Trimble
Estate of
Mr Jeffery Allan Williamson

In Memoriam

Brian John Brandenburg
Mrs Delia Helen Cameron
Mrs Olga Clarke
Mrs Gert Francis
Mr John Leslie Harrison
Mr Lou Jurasko
Mrs Rhonda Linsdell
The Miers Family
Mrs Gemma Minto

Mr Jack Oliphant
Gilbert Stanley Rider
Mr Leslie Francis Smith
(ex P.O.W)
Peter H Solomon
Mr Michael Storah
Mr Paul Wilkinson
Mrs May Young

Acknowledgements continued

Cyril Gilbert Testimonial Fund

The Cyril Gilbert Testimonial Fund was established to embrace the enduring spirit of one of Australia's great war heroes in our fight against cancer. The following donors have united to bring the fund to a level where it makes a truly impactful difference in cancer care:

Platinum 50K +

Greenslopes Private Hospital

Mr Paul Ramsay AO

The QLD Ex Prisoner of War Association

Mr and Mrs Blair and Joy Smith and Joanne Lesley Usher

Gold 20K +

Mrs Colleen Makhecha

RSL Queensland

Silver 10K +

Mrs Joanne Lesley Usher

Sullivan Nicolaides Pathology

Diggers Dozen –GPH

Bronze 5K +

Mr Cyril Gilbert OAM

Associate Professor Andrew Nicol

Mr Richard Lizzio

Ms Carmel Monaghan

Redlands RSL

Mr Pat Welsh

Dr Pretoria Bilinski

Mrs Anne Maree Wright

The Irving/Legerton Families

Community Support

We would also like to gratefully acknowledge the following community groups for the support they have shown to our research in 2014/15:

2/10 Field Regiment Association

Algester Parkinson Lions Club

Australian Institute of Management

Ashgrove RSL Sub Branch

Bribie Island RSL Sub Branch Inc.

BHP Billiton matched Giving Program

Charities Aid Foundation

Col Shields Golf Day

Deception Bay RSL Sub-Branch

Gayndah RSL Sub-Branch

Grill'd

Hervey Bay RSL & Services Memorial Club

Hibiscus Society of Queensland Inc

The Library Café

Mr Ken McDonald

Mc Kinlay Race Club

Parliament of Queensland

Order of the secret monitor

for Northern Australia and Papua

Rotary Club of Ashgrove/ The Gap

RSL Care

RSL South Eastern District Limited

Tattersall's Club

War Widows Guild of QLD – South East Social Group

War Widows' Guild Sherwood Social Club

Wynnum Manly Historical Society

Wynnum RSL Sub Branch Women's Auxiliary

Ambassadors

Ian Chappell – Ambassador for PTSD Initiative

Volunteers

Gallipoli Medical Research Foundation values the incredible support given by the women and men who volunteer their time to support our research. We are ever grateful to the members of the Diggers Dozen volunteer group and to all Care Volunteers at Greenslopes Private Hospital. Your spirit and energy inspire us every day.

Acknowledgements continued

Gallipoli Centenary Ball

We would like to give particular thanks to all everyone who helped to make the Gallipoli Centenary Ball a success. It is people like you who keep the ANZAC spirit alive, thank you!



Calleija



**STYLED
EVENTS**
inspirational event theming

GREENSLOPES
PRIVATE HOSPITAL



**STEALTH
CREWING**

SACHA DRAKE



BACHhair



Financial Highlights 2014–2015

A full copy of the audited financial Statements can be found here:

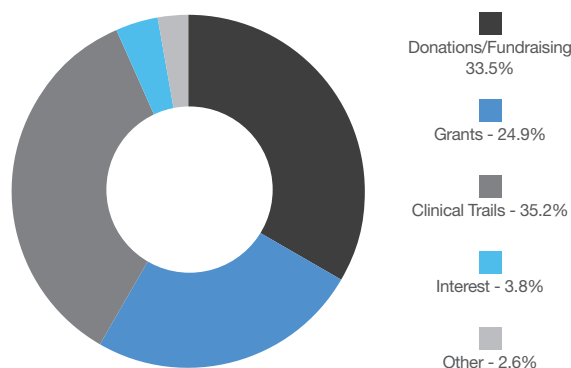
<http://www.gallipoliresearch.com.au/About-Us/annual-report>

This financial year the Foundation experienced growth in nearly all income streams. Total Revenue was \$3.418M, an increase of nearly \$900K on the prior year. Grant funds received for the PTSD research initiative are the main contributor to this increase however fundraising revenue was also higher thanks to the hugely successful ANZAC Centenary Ball.

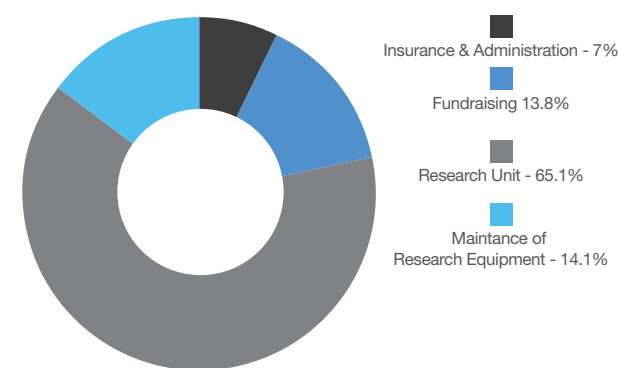
Total Expenditure was \$3.429M, an increase of \$600K on last year. Expenditure on the PTSD research initiative was the main reason for the increase. Just over 65% of total expenditure was spent on research and clinical trial activities with administrative costs again kept to a minimum.

Cash balances and retained earnings remained solid during 2014/15 resulting in a strong financial base.

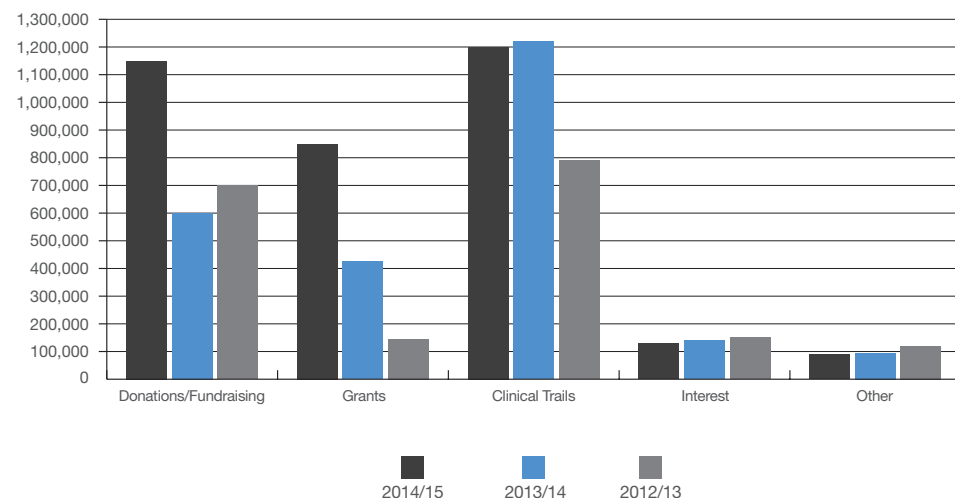
Income 2014/15



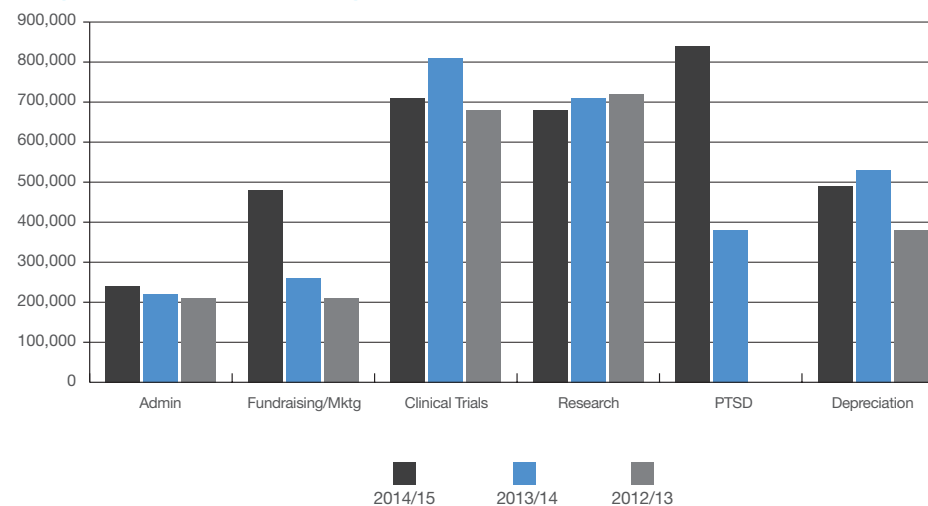
Expenditure 2014/15



Income Comparison 2013–2015



Expenditure Comparison 2013–2015



Appendix – Publications per research unit

Liver Research Unit

Journal (peer reviewed)

- 2014 Feld JJ, Kowdley KV, Coakley E, Sigal S, Nelson DR, Crawford D, Weiland O, Aguilar H, Xiong J, Pilot-Matias T, DaSilva-Tillmann B, Larsen L, Podsadecki T, Bernstein B (2014). Treatment of HCV with ABT-450/r-ombitasvir and dasabuvir with ribavirin. *N Engl J Med*; 370:1594-1603.
- 2014 Thorling CA, Roberts MS, Liu X, Fletcher LM, Crawford D, Burczynski FJ. Effects of long-term hepatic ischemia-reperfusion injury on the function of P-glycoprotein in vivo in rats. *J Pharm Pharm Sci.* 2014;17(1):121-35.
- 2014 Holmes JA, Roberts SK, Ali RJ, Dore GJ, Sievert W, McCaughan GW, Crawford DHG et al. ITPA genotype protects against anaemia during peginterferon and ribavirin therapy but does not influence virological response rates. *HEPATOLOGY* 2014;59:2152-2160
- 2014 Crawford DHG. Hereditary Hemochromatosis Types 1, 2 and 3. *Clinical Liver Disease* 2014, 3(5):96-97.
- 2014 Roberts SK, Mitchell J, Leung R, Booth D, Bollipo S, Ostapowicz G, Sloss A, McCaughan GW, Dore GJ, Thompson A, Crawford DH, Sievert W, Weltman M, Cheng W, George J; Australian Liver Association Clinical Research Network. Distribution of interferon lambda-3 gene polymorphisms in Australian patients with previously untreated genotype 1 chronic hepatitis C: Analysis from the PREDICT and CHARIOT studies. *J Gastroenterol Hepatol.* 2014 Jan;29(1):179-84. doi: 10.1111/jgh.12424.
- 2014 McDonald CJ, Wallace DF, Ostini L, Subramaniam VN. (2014) Parenteral vs oral iron: Influence on hepcidin signaling pathways through analysis of Hfe/Tfr2 null mice. *Am J Physiol Gastrointest Liver Physiol.* 306: G132-G139.
- 2014 Subramaniam VN, Wallace DF. Linking hypoxia and iron homeostasis: a 'plate' full of factors. *Gut.* 2014 Dec;63(12):1840-2.
- 2014 K.R. Bridle, A.L. Sobbe, C.E. de Guzman, N. Santrampurwala, L.A. Jaskowski, A.D. Clouston, C. Campbell, V.N. Subramaniam, D.H.G. Crawford. Lack of efficacy of mTOR inhibitors and ACE pathway inhibitors as antifibrotic agents in evolving and established fibrosis in Mdr2-/- mice (2015). *Liver International* 35(4):1451-63.
- 2015 McDonald CJ, Ostini L, Wallace DF, Lyons A, Crawford DH, Subramaniam VN. Next-generation sequencing: Application of a novel platform to the analysis of atypical iron disorders. *J Hepatol.* 2015 Jul 4. pii: S0168-8278(15)00454-7. doi: 10.1016/j.jhep.2015.06.027. [Epub ahead of print] PubMed PMID: 26151776
- 2015 McLaren CE, Emond MJ, Subramaniam VN, Phatak PD, Barton JC, Adams PC, Powell LW, Gurrin LC, Ramm GA, Anderson GJ, McLaren GD. Exome sequencing in HFE C282Y homozygous men with extreme phenotypes identifies a GNPAT variant associated with severe iron overload. *Hepatology.* 2015 Apr 23. Correspondence. doi: 10.1002/hep.27851. [Epub ahead of print] PubMed PMID: 25914125.
- 2015 Rishi G, Wallace DF, Subramaniam VN. Hcpidin: Regulation of the master iron regulator. *Biosci Rep.* 2015 Mar 31. [Epub ahead of print] PubMed PMID: 25826005; PubMed Central PMCID: PMC4438303.
- 2015 McLaren CE, Emond MJ, Subramaniam VN, Phatak PD, Barton JC, Adams PC, Goh JB, McDonald CJ, Powell LW, Gurrin LC, Allen KJ, Nickerson DA, Louie T, Ramm GA, Anderson GJ, McLaren GD. Exome sequencing in HFE C282Y homozygous men with extreme phenotypes identifies a GNPAT variant associated with severe iron overload. *Hepatology.* 2015 Jan 20. doi: 10.1002/hep.27711. [Epub ahead of print] PubMed PMID: 25605615.
- 2015 McDonald CJ, Ostini L, Bennett N, Subramaniam N, Hooper J, Velasco G, Wallace DF, Subramaniam VN. Functional analysis of matriptase-2 mutations and domains: insights into the molecular basis of iron-refractory iron deficiency anemia. *Am J Physiol Cell Physiol.* 2015 Apr 1;308(7):C539-47. doi: 10.1152/ajpcell.00264.2014. Epub 2015 Jan 14. PubMed PMID: 25588876.
- 2015 Wallace DF, Subramaniam VN. Analysis of IL-22 contribution to hepcidin induction and hypoferremia during the response to LPS in vivo. *Int Immunol.* 2015 Jun;27(6):281-7. doi: 10.1093/intimm/dxu144. Epub 2015 Jan 7. PubMed PMID: 25568302.
- 2015 Wallace DF, Secondes ES, Rishi G, Ostini L, McDonald CJ, Lane SW, Vu T, Hooper JD, Velasco G, Ramsay AJ, Lopez-Otin C, Subramaniam VN. A critical role for murine transferrin receptor 2 in erythropoiesis during iron restriction. *Br J Haematol.* 2015 Mar;168(6):891-901. doi: 10.1111/bjh.13225. Epub 2014 Nov 17. PubMed PMID: 25403101.
- 2015 Sobbe A, Bridle KR, Jaskowski L, de Guzman CE, Santrampurwala N, Clouston AD, Campbell CM, Subramaniam VN, Crawford DH. Inconsistent hepatic antifibrotic effects with the iron chelator deferiasirox. *J Gastroenterol Hepatol.* 2015 Mar;30(3):638-45. doi: 10.1111/jgh.12720. PubMed PMID: 2516820
- 2015 H Wang, X Liang, YH Mohammed, JA Thomas, KR Bridle, CA Thorling, JE Grice, Z Ping Xu, X Liu, DHG Crawford and MS Roberts (2015). Real-time histology in liver disease using multiphoton microscopy with fluorescence lifetime imaging. *Biomedical Optics Express,* 6(3):780-792.

Appendix continued

- 2015 J Reiling, DSR Lockwood, AH Simpson, CM Campbell, KR Bridle, N Santrampurwala, LJ Britton, DHG Crawford, CHC Dejong, J Fawcett (2015). Urea production during Normothermic Machine Perfusion- Price of Success? Liver Transplantation, 21(5):700-3.
- 2015 H Wang, CA Thorling, X Liang, KR Bridle, JE Grice, Y Zhu, DHG Crawford, Z Ping Xu, X Liu and MS Roberts (2015). Diagnostic imaging and therapeutic application of nanoparticles targeting the liver. Journal of Materials Chemistry B, 3: 939–958.
- 2015 Clark PJ, Stuart KA, Leggett BA, Crawford DH, et al. Remoteness, race and social disadvantage: disparities in hepatocellular carcinoma incidence and survival in Queensland, Australia. Liver Int. 2015 Apr 21. In Press.
- 2015 Lim SG, Amarapurkar DN, Chan HL, Crawford DH, et al. Reimbursement policies in the Asia-Pacific for chronic hepatitis B. Hepatol Int. 2015 Jan;9:43-51.
- 2015 Adams LA, Crawford DH, Stuart K, House MJ, St Pierre TG, Webb M, Ching HL, Kava J, Bynevelt M, MacQuillan GC, Garas G, Ayonrinde OT, Mori TA, Croft KD, Niu X, Jeffrey GP, Olynyk JK. The impact of phlebotomy in nonalcoholic fatty liver disease: A prospective, randomized, controlled trial. Hepatology. 2015 May;61(5):1555-64. doi: 10.1002/hep.27662. Epub 2015 Mar 20.
- 2015 Liang X, Grice JE, Zhu Y, Liu D, Sanchez WY, Li Z, Crawford DH, Le Couteur DG, Cogger VC, Liu X, Xu ZP, Roberts MS. Intravital multiphoton imaging of the selective uptake of water-dispersible quantum dots into sinusoidal liver cells. Small. 2015 Apr 8;11(14):1711-20. doi: 10.1002/smll.201402698. Epub 2014 Dec 15.
- 2015 Omata M, Kanda T, Yokosuka O, Crawford D, Al-Mahtab M, Wei L, Ibrahim A, Lau GK, Sharma BC, Hamid SS, Chuang WL, Dokmeci AK. Features of hepatitis C virus infection, current therapies and ongoing clinical trials in ten Asian Pacific countries. Hepatol Int. 2015 May 5. [Epub ahead of print]
- Published abstract**
- 2014 N. Santrampurwala, K. R. Bridle, ML Heritage, L. A. Jaskowski, A. S. Wilkinson, D. H. G. Crawford, V. N. Subramaniam (2014). Transcriptomic analysis identifies differentially expressed genes in an Hfe knock out mouse model of steatohepatitis. Hepatology International, 8(suppl 1):S327.
- 2014 C. J. McDonald, D. F. Wallace, D. H. Crawford, V. N. Subramaniam (2014). A next-generation sequencing platform for the identification of genetic variants associated with a typical iron disorders. Hepatology International, 8(suppl 1):S329.
- 2014 Y. Yuan, C. J. McDonald, D. H. G. Crawford, V. N. Subramaniam (2014). Hepatic microRNA expression is altered in a murine model of iron and fat co-mediated liver injury. Hepatology International, 8(suppl 1):S344.
- 2014 P. J. Clark, K. A. Stuart, P. D. Baade, P. C. Valery, D. H. Crawford, C. M. Olsen, G. A. Macdonald,
- B. A. Leggett, D. C. Whiteman (2014). Hepatocellular carcinoma epidemiology in Queensland, 1996–2010. Hepatology International, 8(suppl 1):S397.
- 2014 CJ McDonald, Y Yuan, N Santrampurwala, DHG Crawford, VN Subramaniam (2014) Hepatic microRNA expression is altered in a murine model of iron and fat co-mediated liver injury. Journal of Gastroenterology and Hepatology 2014, 29(2): A2.
- 2014 J Reiling, KR Bridle, N Santrampurwala, LJ Britton, DHG Crawford, CHC Dejong, J Fawcett, The potential role of lipopolysaccharides in the development of biliary injury in an animal partial liver ischaemia model. Journal of Gastroenterology and Hepatology (2014) 29 (suppl.2): A4.
- 2014 J Reiling, DSR Lockwood, AH Simpson, CM Campbell, KR Bridle, N Santrampurwala, LJ Britton, DHG Crawford, CHC Dejong, J Fawcett, Successful ex-vivo normothermic oxygenated machine perfusion of human donor livers. Journal of Gastroenterology and Hepatology (2014) 29 (suppl.2): A81.
- 2014 J Reiling, DSR Lockwood, AH Simpson, CM Campbell, KR Bridle, N Santrampurwala, LJ Britton, DHG Crawford, CHC Dejong, J Fawcett, Successful ex-vivo normothermic oxygenated machine perfusion of human donor livers. Hepatology (2014) 60 (suppl. S1)
- Conference Paper (peer reviewed)**
- 2015 J Reiling, KR Bridle, C Campbell, N Santrampurwala, L Britton, CHC Dejong, A Cohen, DHG Crawford, J Fawcett Pre-treatment with TIMP-3 prevent the development of biliary injury in an LPS enhanced ischaemia-reperfusion animal model. ALA Hepatology and gastrointestinal research workshop, Bowral, 24-26 May 2015
- 2015 N. Santrampurwala, KR Bridle, J Reiling, LJ Britton, LA Jaskowski, VN Subramaniam, DHG Crawford. Blunted BMP6 signalling: a potential mechanism for iron loading in NAFLD. ALA Hepatology and gastrointestinal research workshop, Bowral, 24-26 May 2015

Appendix continued

Liver Cancer Unit

Journal (peer reviewed)

Morris JC., Ramlogan CA., Yu P., Allison J.P., Waldmann TA., Steel JC. (2014) Vaccination with Tumor Cells Expressing IL-15 and IL-15R Inhibit Murine Breast and Prostate Cancer. *Gene Ther.* 21(4):393-401.

Ramlogan-Steel CA, Steel JC, Morris JC. (2014) Lung cancer vaccines: current status and future prospects. *Transl Lung Cancer Res.* 3(1):46-52.

Wang Y, Sui Y, Kato S, Hogg AE, Steel JC, Morris JC, Berzofsky JA. (2015) Vaginal type-II mucosa is an inductive site for primary CD8 T-cell mucosal immunity. *Nat Commun.* 2015 Jan 20;6:6100.

Published abstract

Wang Y, Sui Y., Hogg AE, Steel JC., Morris JC., Berzofsky JA. (2014) Vaginal type-II mucosa acts as an inductive site for the generation of primary CD8+T cell mucosal immune responses JAIDS-J Acq Imm Def. 67(Supp 3): 93-93

Steel JC., Ramlogan-Steel CA., Morris JC. (2015) Genetically modified tumour cells expressing IL-15 and IL-15Ra as an in situ cancer vaccination platform. *J Gene Med.* doi.org/10.1002/jgm.2834: 13-14

Conference Paper (peer reviewed)

Kamdem DT., Steel JC., Wise-Draper T., Kasing W., Hashemi N., Mierzwa M., Morris JC. (2015) Combined radiation and PD-L1 blockade improved tumor control in mouse head and neck squamous cell carcinoma (HNSCC). 2015 American Head & Neck Society Annual Meeting

Steel JC. Morrison BJ., Morris JC. (2015) Cancer Stem Cells Avoid Immune Recognition By The Down Regulation of MHC-I. 27th Lorne Cancer Conference, Lorne Victoria, Australia

Wang Y, Sui Y., Hogg AE, Steel JC., Morris JC., Berzofsky JA. (2014) Vaginal type-II mucosa acts as an inductive site for the generation of primary CD8+T cell mucosal immune responses 16th Annual International Meeting of the Institute of Human Virology, 2014 Baltimore USA.

Steel JC. (2014) Immunotherapeutic approaches to hepatocellular carcinoma. Brisbane Cancer Conference, Brisbane Queensland Australia

Steel JC., Ramlogan-Steel CA., Morris JC. (2015) Genetically modified tumour cells expressing IL-15 and IL-15Ra as an in situ cancer vaccination platform. Australasian Gene and Cell Therapy Society 9th Biennial Conference, Melbourne Australia.

Respiratory Research Unit

Journal (peer reviewed)

Sam Halstrom, Patricia Price, Rachel Thomson
Environmental mycobacteria as a cause of human infection
International Journal of Mycobacteriology April 2015, <http://dx.doi.org/10.1016/j.ijmyco.2015.03.002>

Rachel Thomson, Carla Tolson, Flavia Huygens, Megan Hargreaves.
Strain variation amongst clinical and potable water isolates of *M. kansasii* using automated repetitive unit PCR.
International Journal of Medical Microbiology <http://dx.doi.org/10.1016/j.ijmm.2014.02.004>

Wright H, Thomson R, Reid AB, Carter R, Bartley PB, et al.
Rapidly growing mycobacterial associated with laparoscopic gastric banding.
Emerging Infectious Diseases 2014 Oct <http://dx.doi.org/10.3201/eid2010.140077>

Michael Chou, Archie Clements, Rachel Thomson.
A spatial epidemiological analysis of nontuberculous mycobacterial infections in Queensland, Australia. *BMC Infectious Diseases* 2014;14:279

Rogers G, Zain N, Bruce K, Burr L, Chen A, Rivett D, McGuckin M, Serisier D.
A novel microbiota stratification system predicts future exacerbations in bronchiectasis. *Ann Am Thorac Soc* 2014;11(4):496-503

Rogers GB, Bruce KD, Martin ML, Burr LD, Serisier DJ.
Long-term macrolide therapy alters respiratory microbiota composition in bronchiectasis - a randomised, double-blind, placebo-controlled trial. Early Online Publication, 14 October 2014 doi:10.1016/S2213-2600(14)70213-9

Alice C-H Chen; Megan L Martin; Rohan Lourie; Geraint B Rogers; **Lucy Burr**; Sumaira Z Hasnain; Simon D Bowler; Michael A McGuckin; David J. Serisier.
Adult non-cystic fibrosis bronchiectasis is characterised by airway luminal th17 pathway activation. *PlosOne* 2014 – IN PRESS

Book – Book chapter

Burr L, Cunningham J, Serisier D, SIDE EFFECTS OF DRUGS ANNUALS (SEDA) VOLUME 36 CHAPTER - MISCELLANEOUS ANTIBACTERIAL DRUGS – IN PRESS (2014)

Published abstract

Jordan Cunningham, Daniel J. Smith, Scott Bell, **Rachel Thomson**
Validation Of A Nontuberculous Mycobacterial ELISA In An Australian Cystic Fibrosis And Non-Cystic Fibrosis Population
In *D108. DIAGNOSIS AND MANAGEMENT OF NONTUBERCULOUS MYCOBACTERIA INFECTIONS*; American Thoracic Society, 2015; pp A6297-A6297.

Appendix continued

Burr L, O'Sullivan R. Addition of a mandibular advancement splint to cpap therapy reduces cpap pressure requirements in obstructive sleep apnoea – a pilot study. *Respirology* (2015) 20 (Suppl.S2), 152

Steven L. Taylor, Geraint B. Rogers, Alice C. Chen, **Lucy D. Burr**, Michael A. McGuckin, David J. Serisier. **Collagen Protease Levels Differ With Airway Microbiota Composition And Lung Function In Bronchiectasis.** *Respirology* (2015) 20 (Suppl.2), 127

Gianny P Scoleri, Lex Ex Leong, **Lucy D Burr**, Jocelyn M Choo, Rachel M Thomson, David J Serisier, Geraint B Rogers. **Spatial Variation In The Composition Of Infective Lung Microbiota Revealed By 16s rRNA Gene Sequence Analysis Of Multisite Bronchoalveolar Lavage** *Respirology* (2015) 20 (Suppl.2): 28

Lucy Burr, Geraint Rogers, Steven Taylor, Michael McGuckin, David Serisier. **Sub Inhibitory Erythromycin Reduces The Expression Of Key P. Aeruginosa Virulence Determinants In Non-CF Bronchiectasis Subjects** – *Respirology* (2015) 20 (Suppl.2), 29

Ophthalmology Research Unit

Journal (peer reviewed)

Layton CJ (2014), **Factors associated with significant ocular injury in conservatively treated orbital fractures.** *J Ophthalmology* Vol 2014, ID 412397

De Moraes G, Layton CJ. (2015) **The effect of glucose and insulin on the susceptibility of cultured photoreceptor-like cells to hypoxia** *Acta Ophthalmologica* (accepted)

Hsu CL, Layton CJ (2015) **Familial Disorders of the Optic Disc: A Presentation of a Mother and Daughter and Review of Literature** *Case Rep Ophthalmol* (Accepted)

Layton CJ (2015). **Decoupling of cellular reducing equivalents and cell survival in in vitro models of diabetic retinal neuropathy** *Vis Neuroscience* (Submitted)

Conference Paper (peer reviewed)

De Moares G, Layton CJ. (2015) **The effect of glucose and insulin on the susceptibility of cultured photoreceptor-like cells to hypoxia**, European Association for Vision and Eye Research, Nice, France.

Layton CJ (2015). **The significance of new prognostic indicators in atrophic macular degeneration to practice and clinical trial design.** ODMA, Brisbane, Australia.

How you can help

All donations of \$2 or more are tax deductible – thank you.

Donate

If you would like to donate to our work please contact the Foundation Office using the details listed on this page. Donations can be made by cash, cheque, or credit card.

You can also donate online via our website www.gallipoliresearch.com.au.

Become a Regular Giver

Regular donations are essential for the Foundation to plan ahead for future initiatives, secure in the knowledge of regular financial support. If you would like to donate to our work please contact the Foundation Office using the details listed on this page.

GMRF Regular Givers receive an itemised tax receipt for all donations each year, allowing you to process your tax return more easily.

Become a Discovery Partner

GMRF's research planning decisions must be considered in multiple year time frames, even though most of our funding is only sourced on an annual basis. Our Discovery Partners are committed supporters who confirm their intention to support us into the future, thereby giving us the security to reach for even bigger goals in our quest for new treatments and breakthroughs.

If you would like information on the Discovery Partner program, please contact Anna Coles (GMRF Philanthropy Manager) on 07 3394 7105 or ColesAnna@ramsayhealth.com.au.

Memorial Gifts

Memorial donations can be made to the GMRF in lieu of floral tributes. Memorial gift envelopes are available from the Foundation Office or can be requested via your funeral director.

Community Fundraising

GMRF relies on the amazing efforts of many individuals and community groups to raise funds in their local community. If you or your community group would be interested in finding out more about how to do this, please contact Maria Noonan (GMRF Communications Coordinator) on 07 3394 6776 or NoonanMaria@ramsayhealth.com.au.

Bequests

Leaving a bequest in your Will is one of the most significant ways you can assist our work and leave a lasting legacy for future generations. After considering family and friends, you might consider making a provision in your Will to assist GMRF.

If you would like a copy of our Information Pack to help you in planning your Bequest, please contact Anna Coles (GMRF Philanthropy Manager) on 07 3394 7105 or ColesAnna@ramsayhealth.com.au.

Add your name to the GMRF Discovery Partners honour board

We are proud to display donations of over \$5,000 on the GMRF Discovery Partners honour board, located in the heart of Greenslopes Private Hospital. We update the honour board once a year, in time for Remembrance Day. If you would like to make a donation and add your name or the name of a loved one to the board, please contact Anna Coles (GMRF Philanthropy Manager) on 07 3394 7105 or ColesAnna@ramsayhealth.com.au.

Our promise to you

We are fortunate to receive a great deal of in-kind support from Greenslopes Private Hospital which, in combination with the income we derive from our Clinical Trials Unit, pays for the administration costs of our Foundation. Therefore, 100% of the money you give us goes directly to medical research.

Other ways to help

Volunteering


The Diggers Dozen volunteers, based at Greenslopes Private Hospital, are always on the lookout for new volunteers. If you can help, please contact President Joan Harris on (07) 3394 7026.

Stay in touch

Hear the latest research news and spread the word about the important work happening at GMRF.

Tribute is the research newsletter of GMRF, produced twice a year. Contact us by email or telephone to receive your personal copy.

You can also follow us on:

 www.facebook.com/GallipoliResearch
 @GMRF

Foundation Office contact details:

Gallipoli Medical Research Foundation

Greenslopes Private Hospital
Newdegate Street, GREENSLOPES QLD 4120

T: (07) **3394 7284**

Fax: (07) 3394 7767

E: enquiries.gmrf@ramsayhealth.com.au

W: www.gallipoliresearch.com.au

ABN 42 077 750 693

The Gallipoli Medical Research Foundation logo includes a representation of Simpson and his donkey, a well known and much loved icon that epitomises the sacrifice made by our brave service personnel at Gallipoli and in many conflicts since that tragic but heroic chapter in our history. The commitment, dedication and selflessness that enabled Simpson to go out, time and again, to rescue his wounded comrades encourages us to strive towards excellence in medical research so that others can benefit in this generation and generations to come.

John Simpson Kirkpatrick was born and lived until age sixteen in South Shields, Tyneside, UK. One of a family of seven including his father, Robert, a merchant navy seaman and Sarah, his mother who also worked as a domestic housekeeper, John's young life was difficult. Food was scarce, the neighbourhood was poor and the family moved frequently. His father passed away, five years after he left the navy because of injury. John was 17. He had left school at 12 to take up work as a "milk-float boy". He worked with a dappled grey pony who became his close friend; others remarking on the fact that John talked to the pony like he would another human being.

When his father died, John went to sea and on his second ship he came to Australia. He worked here for four years, on coastal shipping vessels and he tried cane cutting and horse-mounted stock work in Northern Queensland. These latter jobs each lasted only a matter of days; John found the heat and humidity intolerable. When war broke out in 1914, he was one of the first to enlist in Perth where he joined the 3 Australian Field Ambulance as a stretcher bearer.

The legend of Simpson's deeds at Gallipoli was forged in only 24 days at Anzac Cove. It is believed that he rescued and retrieved more than 300 casualties, sometimes as many as 20 in one day, many under conditions of mortal risk to himself. On 19 May 1915, while making his fourth rescue of the day under heavy fire, he was killed instantly by machine gun fire at a point known as Bloody Angel in Shrapnel Gully. His donkey, "Duffy" still carrying the wounded soldier returned alone to the Advanced Dressing Station of 3 Field Ambulance.

**Acknowledgement: Professor John Pearn AO,
Professor of Paediatrics and Child Health –
University of Queensland and Major General (Rtd.)**



Thank you!

The research conducted by the Gallipoli Medical Research Foundation (GMRF) in the past year has only been possible as a result of the generosity of our donors – thank you.

We receive no Government funding and, therefore, continue to rely completely on your support. Every gift, however big or small, will make a difference and help save lives.

Our promise to you:

We are fortunate to receive a great deal of in-kind support from Greenslopes Private Hospital which, in combination with the income we derive from our Clinical Trials Unit, pays for the administration costs of our Foundation. Therefore, 100% of the money you give us goes directly to medical research.



Gallipoli Medical Research Foundation
Greenslopes Private Hospital
Newdegate Street
GREENSLOPES QLD 4120

T: (07) **3394 7284** Fax: (07) 3394 7767
E: enquiries.gmrf@ramsayhealth.com.au
W: www.gallipoliresearch.com.au
ABN 42 077 750 693